

FOR LEASE

7,429 SF - 86,092 SF

25,244 SF - 130,151 SF

TALL FIRS INDUSTRIAL PARK

A Panattoni Development

14621 AND 14719 170TH AVENUE EAST, BONNEY LAKE, WA



PANATTONI

Construction Underway
Occupancy Q2 2025



NAI Puget Sound
Properties

David Douglas, SIOR, CCIM
Partner
+1 253 203 1326
ddouglas@nai-psp.com

Kyle Schipper, SIOR
Partner
+1 253 203 1320
kschipper@nai-psp.com

Arie Salomon, SIOR, CCIM
Principal
+1 425 586 5636
asalomon@nai-psp.com

Kent Channing
Partner
+1 425 586 5628
kchanning@nai-psp.com

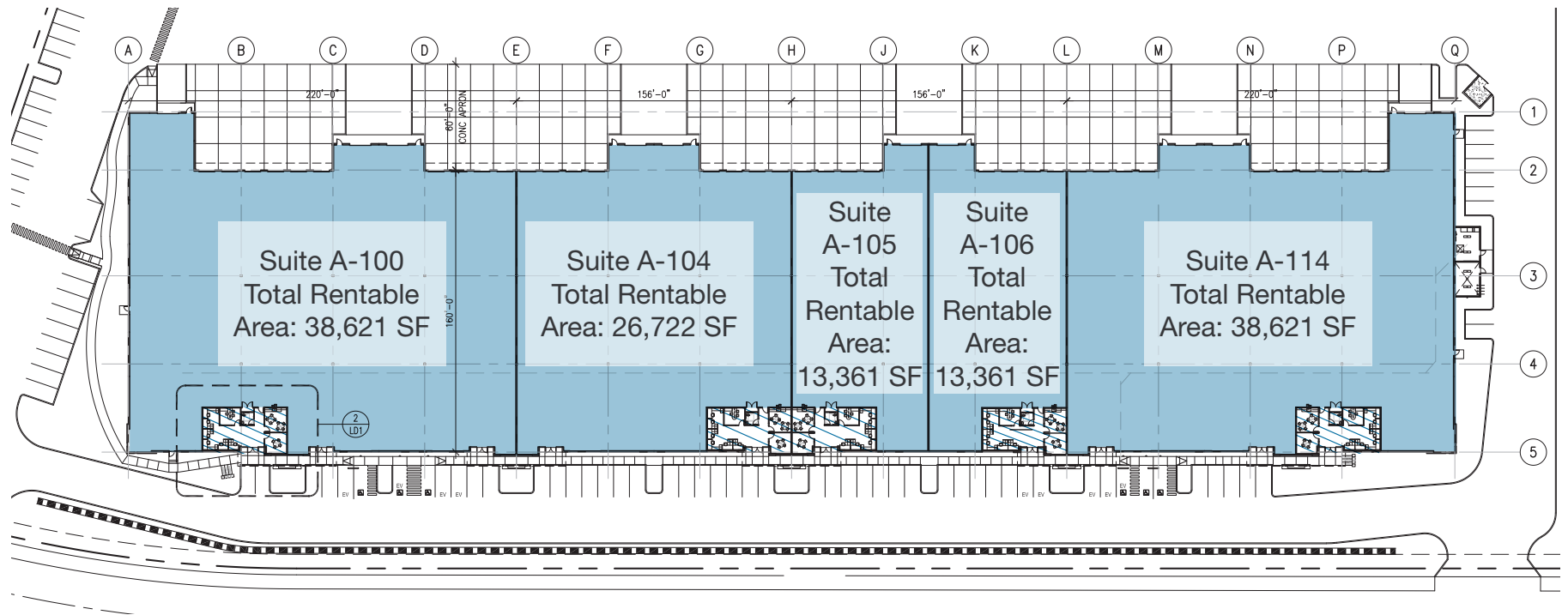
Retaining Wall Construction on 170th Avenue E



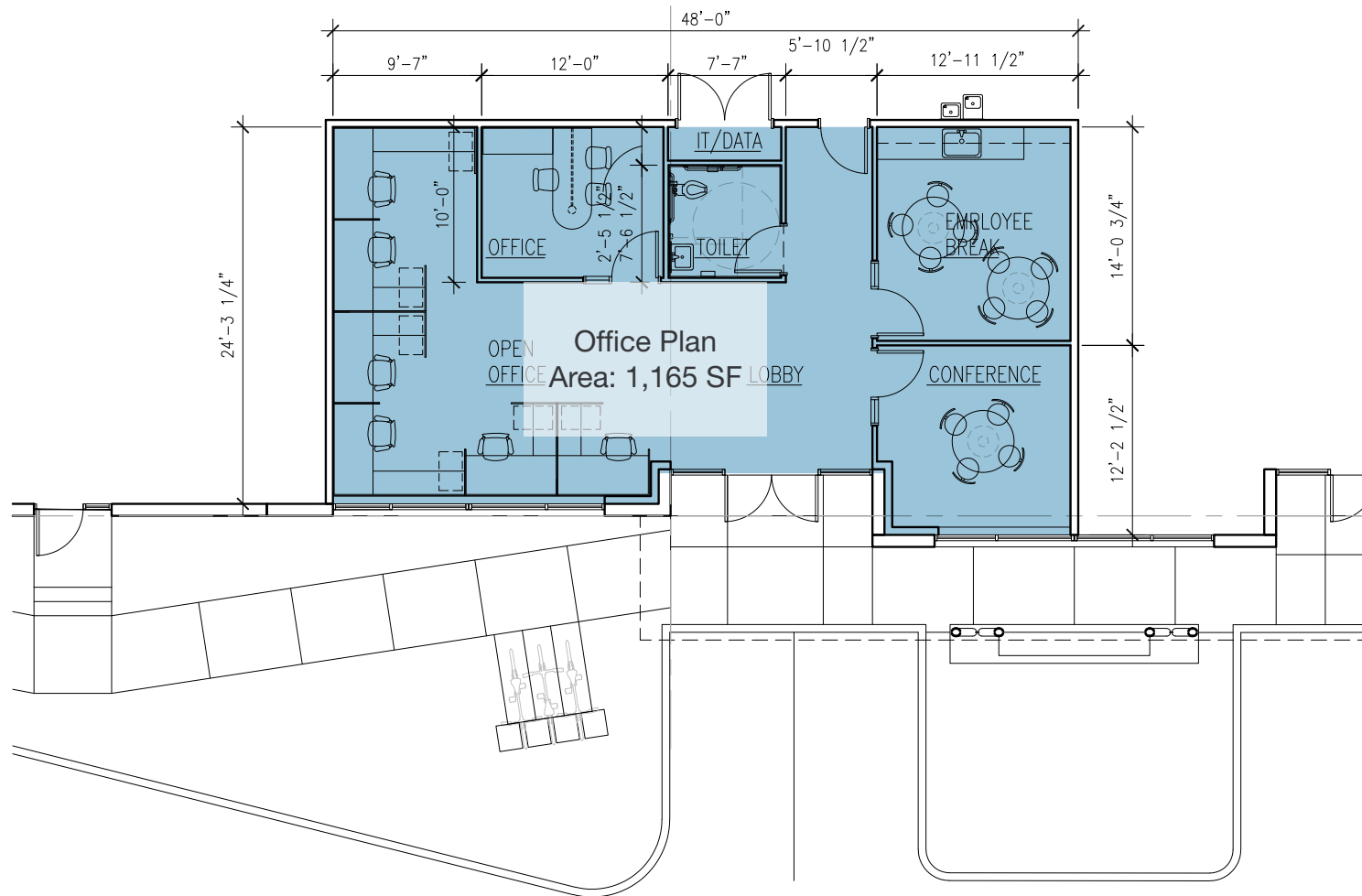
**This image has been modified from its original form*

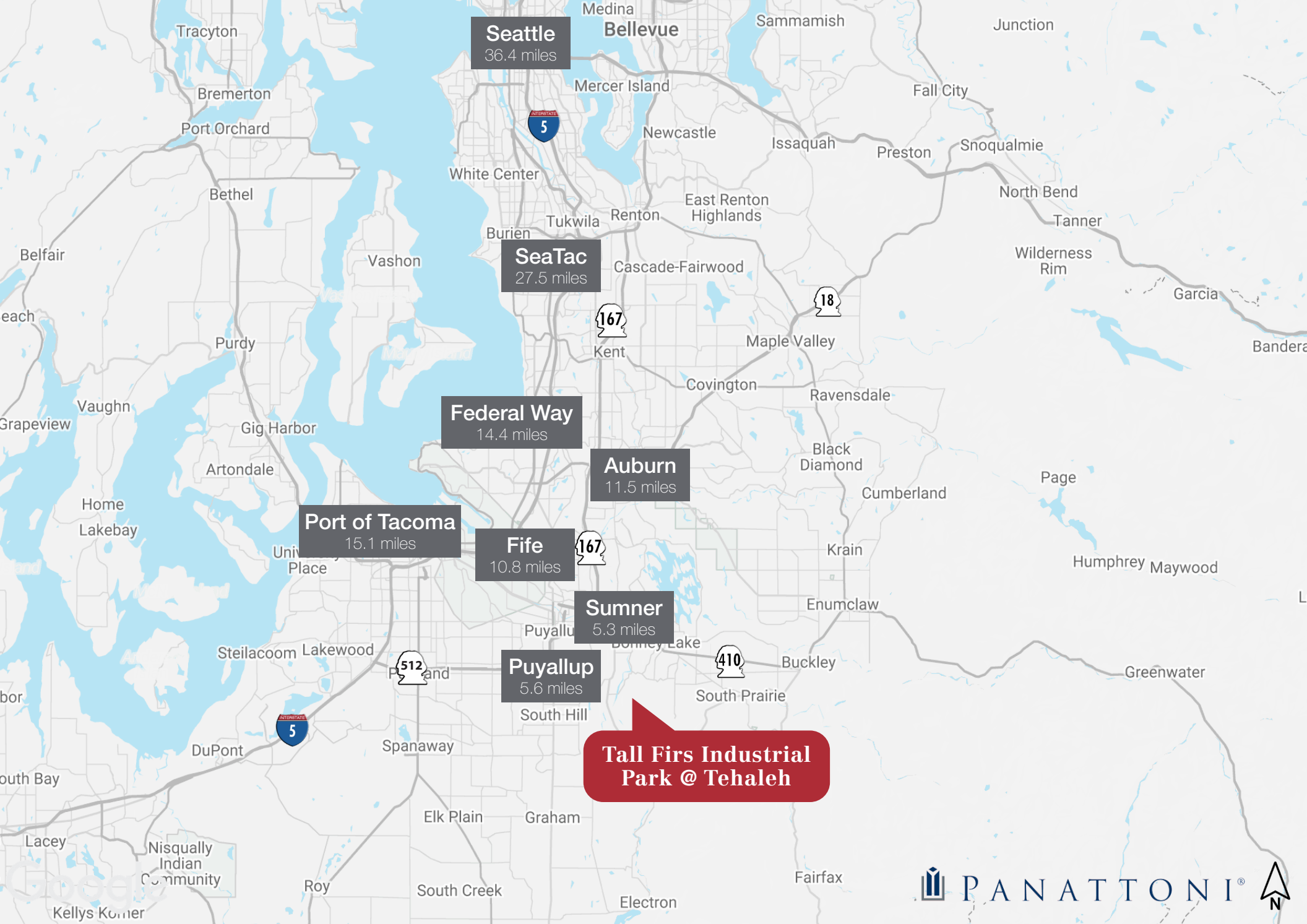


BUILDING A POTENTIAL SPACE CONFIGURATIONS



BUILDING A POTENTIAL SPACE CONFIGURATIONS





Tall Firs Industrial Park @ Tehaleh



THE INFORMATION CONTAINED HEREIN HAS BEEN GIVEN TO US BY THE OWNER OF THE PROPERTY OR OTHER SOURCES WE DEEM RELIABLE, WE HAVE NO REASON TO DOUBT ITS ACCURACY, BUT WE DO NOT GUARANTEE IT. ALL INFORMATION SHOULD BE VERIFIED PRIOR TO PURCHASE OR LEASE.
 G:\SHARED DRIVES\ADMIN TEAM\MARKETING\FLYERS\PIERCE COUNTY\TALL FIRS INDUSTRIAL PARK