

west plains logistics I

10015 W HALLETT RD
SPOKANE, WA 99224

CLASS A INDUSTRIAL
BLDG A 87,279 SF

AVAILABLE NOW

Exclusively marketed by:

Darren Slackman, SIOR
+1 509 622 3595
dslackman@naiblack.com

Bob Swain, CCIM
+1 425 586 5622
bswain@nai-psp.com

NAIBlack

NAI Puget Sound
Properties

PANATTONI

CROW HOLDINGS
CAPITAL

PROPERTY HIGHLIGHTS

visit: www.westplainslogistics.com

- Available for sale or lease
- Located near Spokane Int. Airport & Amazon Fulfillment Center
- Immediate I-90 Access
- Planned spec construction, office, and generous TI package
- Divisible to 50,000 SF
- Zoned Light Industrial
- 30' Clear Height
- 18 Dock Doors
- 574 parking spaces
- ESFR sprinklers
- Call for rates and sale pricing

87,279

Total SF

concrete tilt

Construction

single loaded

Loading

18

Dock Doors

TI allowance

Customization

Available Now

Delivery



BUILDING A



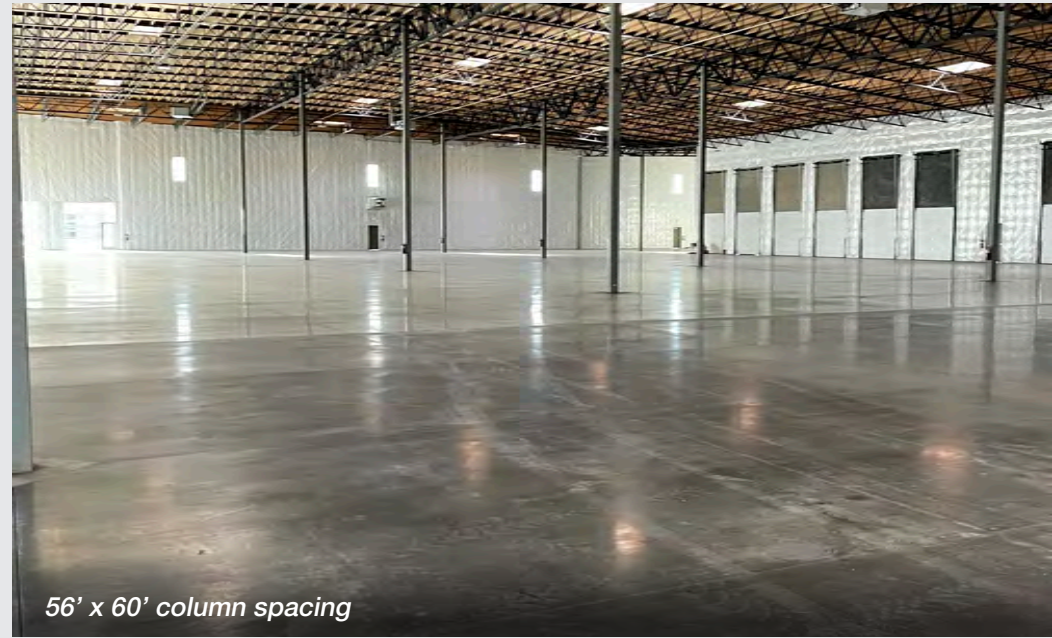
Click to view LIVE on-site construction cameras

BUILDING A

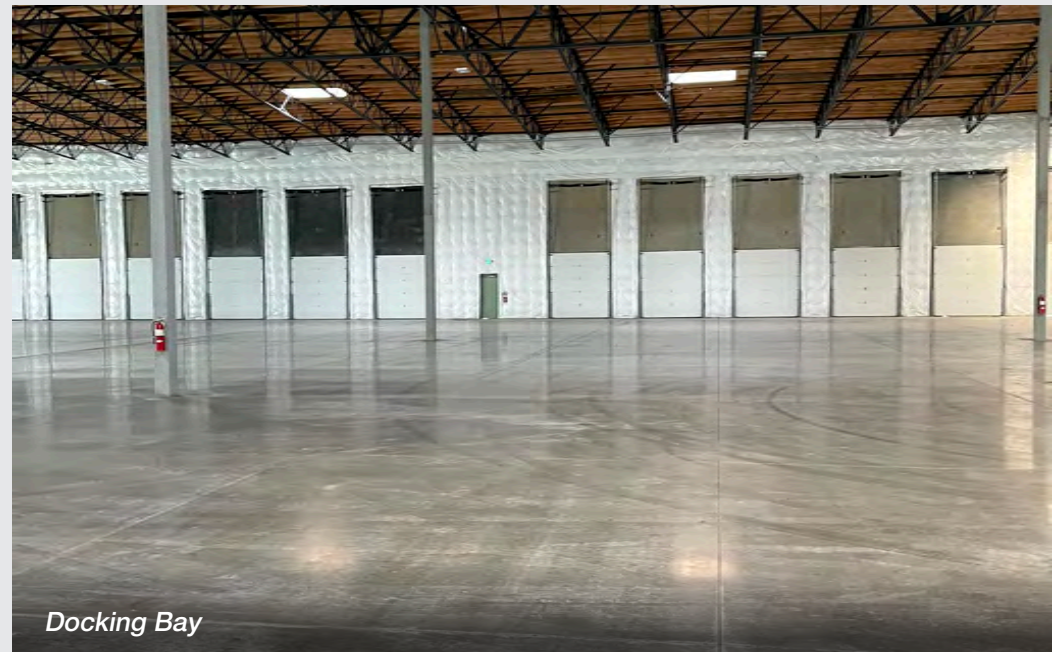
PHOTOS



Building A Office TI



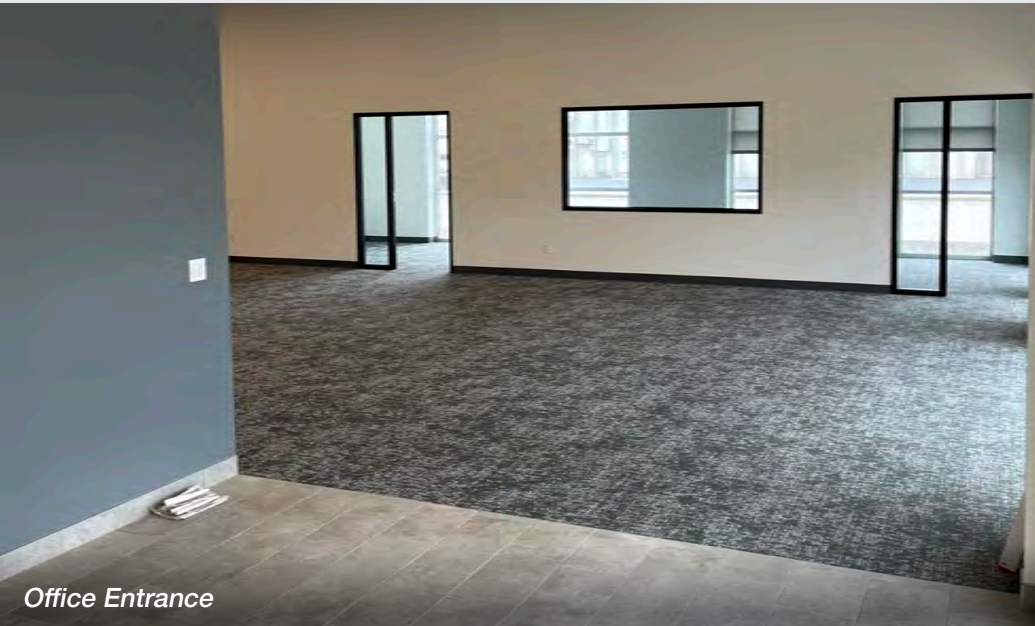
56' x 60' column spacing



Docking Bay

BUILDING A

OFFICE PHOTOS



Office Entrance



Spacious office layout



Contemporary kitchenette aesthetics



Generously-sized office windows



Lofty ceilings

LOCATION

Spokane International Airport

90

Amazon Fulfillment Center GEG1

Amazon Cross-Dock GEG5

Peirone Produce

Bobcat of Spokane

Caterpillar Inc. Spokane Distribution Center

Freightliner NW

Utility Trailer Sales

west plains logistics I

Jensen Distribution Services

Cummins Sales & Service

UTC Aerospace Systems



WHY SPOKANE COUNTY?

The Spokane region is the capital of the Intermountain Northwest, serving a population of almost 2 million people from Eastern Washington, North Idaho, British Columbia, and as far away as Alaska and Montana. It is a major health care, transportation, education and recreation hub.

Spokane has a diversified economy that includes advance manufacturing, aerospace, agriculture, education, finance, insurance, life sciences, health services, logistics and distribution and is also the largest labor market in Eastern Washington and Northern Idaho.

Spokane is one of the most affordable areas to operate or start a business. Labor costs, residential and commercial real estate and utility rates are among the lowest in the region and across the nation.

**For more
information
on why you
should be
in Spokane
County**

[CLICK HERE](#)



559,775

Total Population



3.76%

2021 to 2023 Growth



\$23.69

Average Hourly Wage



3.1%

Unemployment



\$49,266

Average Annual Wage

DRIVE TIMES FROM SPOKANE

**west
plains**
logistics I

Seattle, WA
4 hours, 12 minutes
279 miles

Helena, MT
5 hours, 12 minutes
315 miles

Billings, MT
8 hours, 34 minutes
547 miles

Portland, OR
5 hours, 28 minutes
528 miles

Boise, ID
6 hours, 44 minutes
417 miles

Yakima, WA
3 hours, 3 minutes
202 miles

Tri-Cities, WA
2 hours, 8 minutes
143 miles

Reno, NV
12 hours, 41 minutes
773 miles

Salt Lake City, UT
11 hours, 7 minutes
712 miles

Denver, CO
17 hours
1,098 miles

The information contained herein has been given to us by the owner of the property or other sources we deem reliable, we have no reason to doubt its accuracy, but we do not guarantee it. All information should be verified prior to purchase or lease. G:\Shared drives\ADMIN TEAM\MARKETING\FLYERS\Outside Market County\Spokane County\West Plains Logistics\West Plains Logistics I (10015 W Hallett Road)\West Plains Logistics I (10015 W Hallett Road)



west plains logistics I

Exclusively marketed by:

Darren Slackman, SIOR

+1 509 622 3595

dslackman@naiblack.com

Bob Swain, CCIM

+1 425 586 5622

bswain@nai-psp.com

NAI Black

naiblack.com

NAI Puget Sound
Properties

nai-psp.com

PANATTONI

CROW HOLDINGS
CAPITAL